



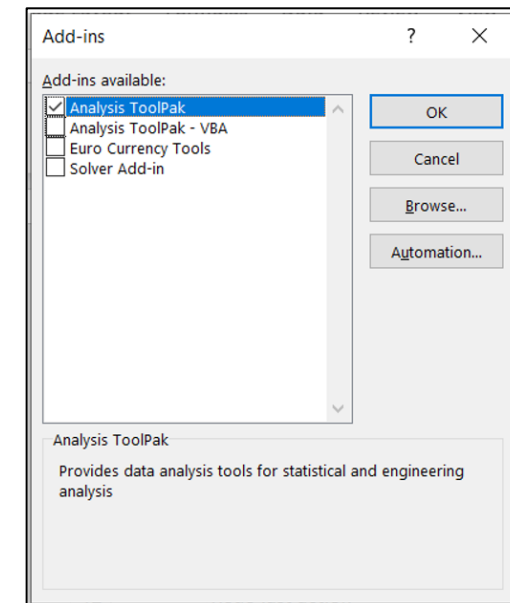
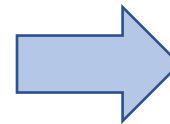
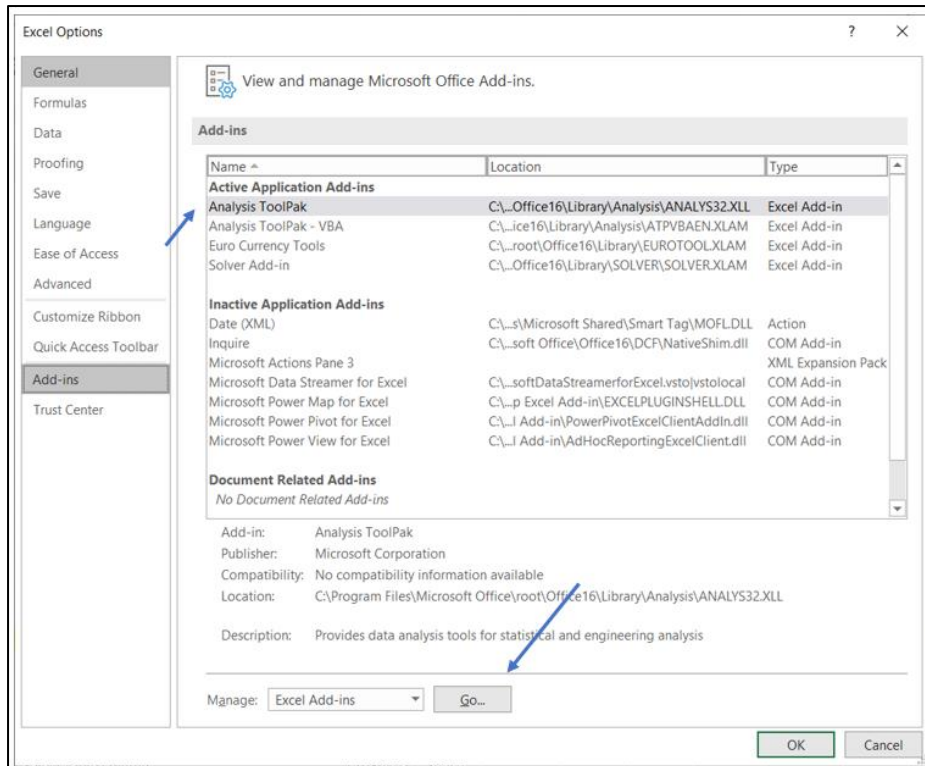
Microsoft Excel – Data Analysis

Analysis ToolPak

Lecturer: Claudio Vallar
School of Economics and Finance

Analysis ToolPak Add-In

- The Analysis ToolPak is implemented as an add-in in Excel.
- If you cannot access Analysis ToolPak, install the add-in by following these steps:
- Choose **File** ⇒ **Options**.
- Select the **Add-Ins** tab and then click on **Analysis ToolPak**



Analysis ToolPak Add-In

- Choose **Data** \Rightarrow **Data Analysis**.
- Select the type of analysis you want to perform

