

# USING THE 'EDITSHARE' VIDEO EDITING SERVER

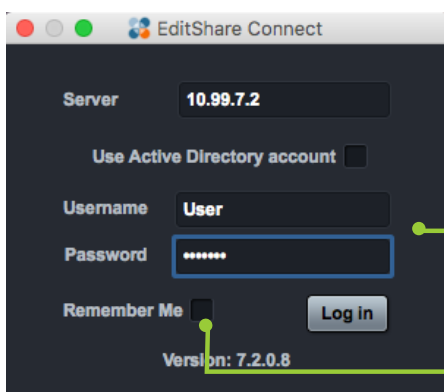
## Logging on and Saving Work

The EditShare server is the way you store and access all of your video editing work.

Using your unique username and password you log-on to EditShare from any of the video editing Macs in G.21 or G.22. This will give access to a media space. This can be used exactly like an external hard drive.



Start 'EditShare Connect'

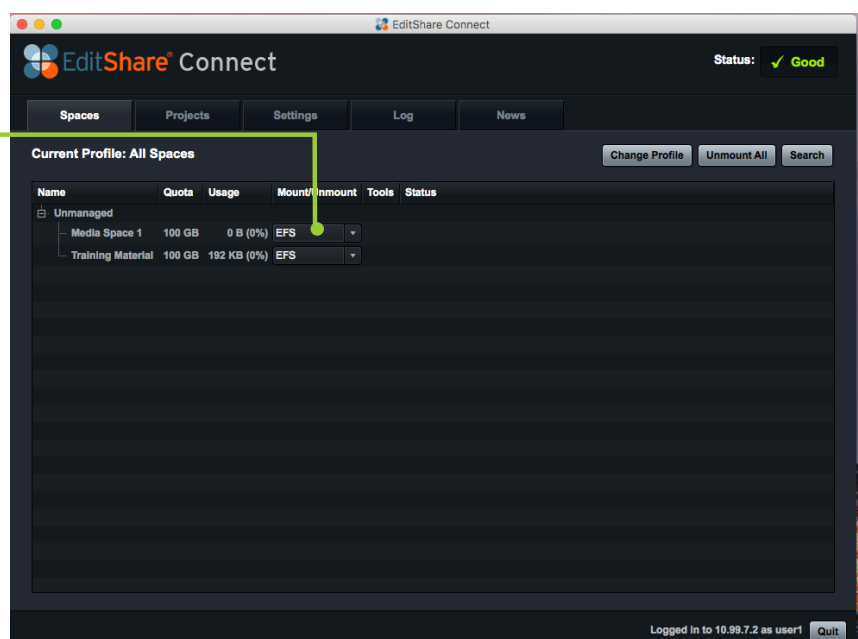


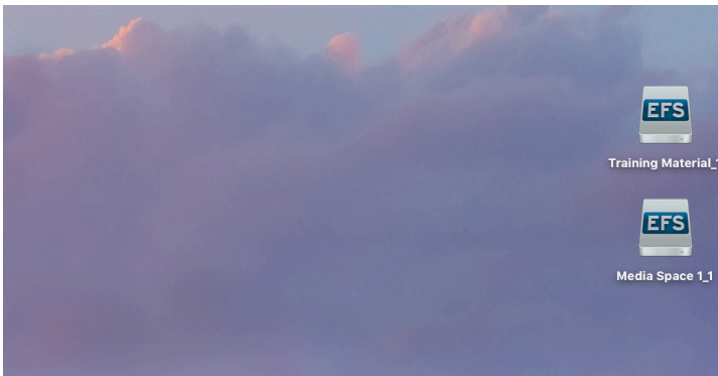
Enter your username and password. The 1st time you log-on use the details given to you, then change your password if you like. Your username is your student number, this will remain the same. Click 'Log In'

Please do not check 'Remember Me'

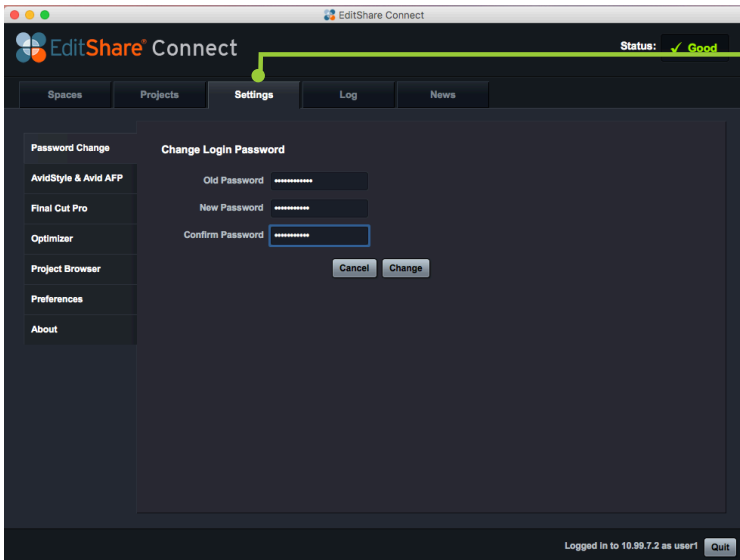
This window will open. To mount your media space(s) select the **EFS** option from the drop-down menu next to the media space name.

EditShare connect should remain running the during your editing session





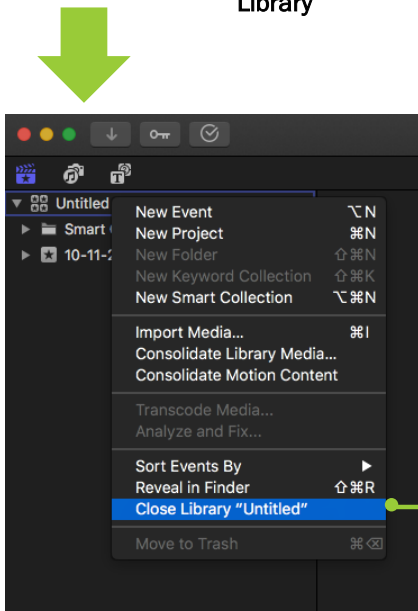
The media space will mount on the desktop. This can be treated like any other drive



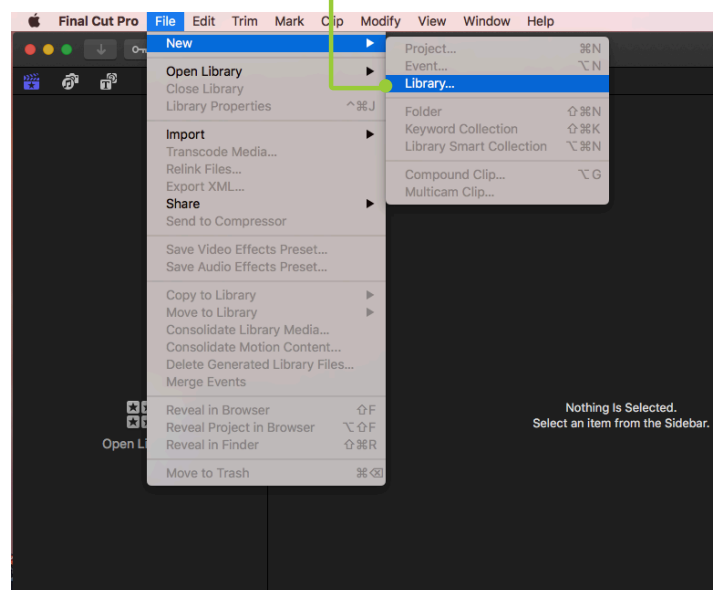
Under the settings tab, you can change your password

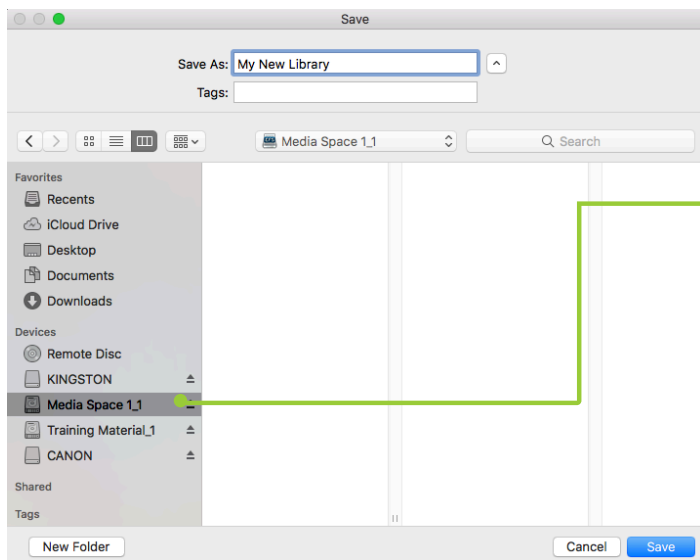


Open Final Cut Pro (or other editing program) and close any open libraries. Right click the library and choose **Close Library**



Next, create a new library. Choose **File > New Library**

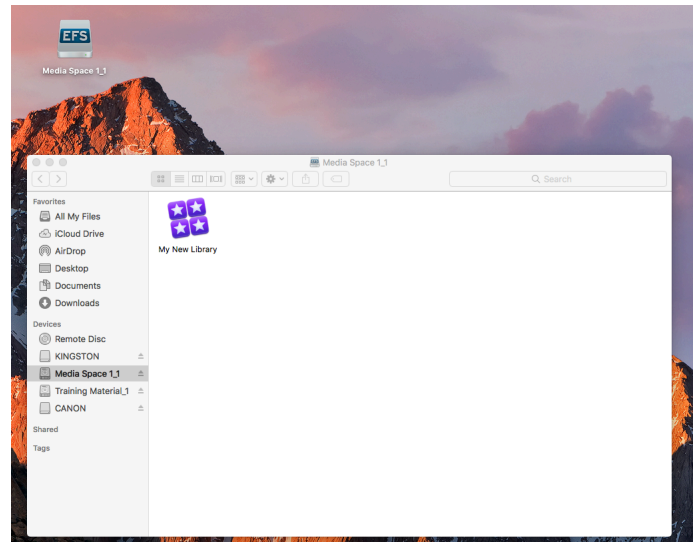




Give the library a name and save it in the media space. Select the media space in list on the left and click Save

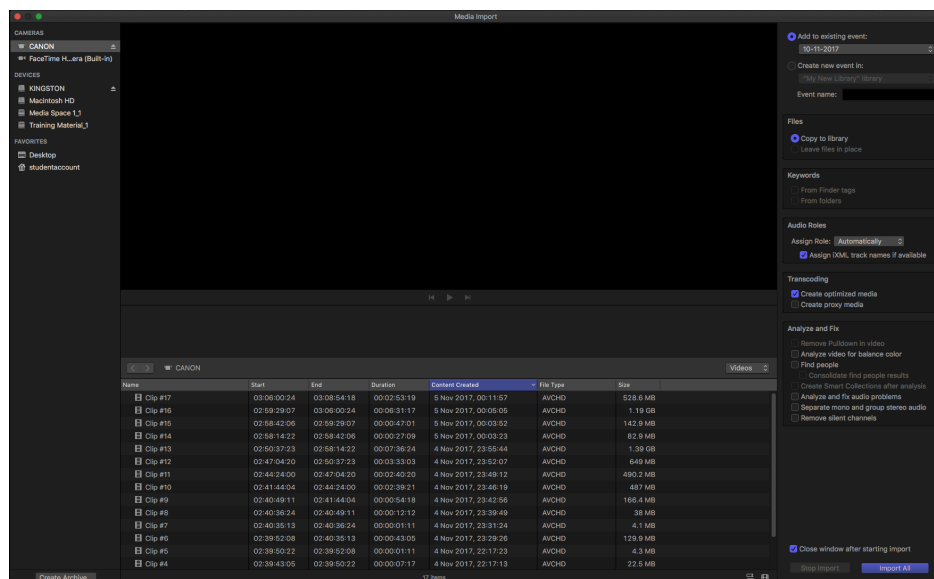
Media Space listed here

Your new library will be saved inside the media space on the server, along with any media you import into it. It can be accessed from any of the video editing Macs.

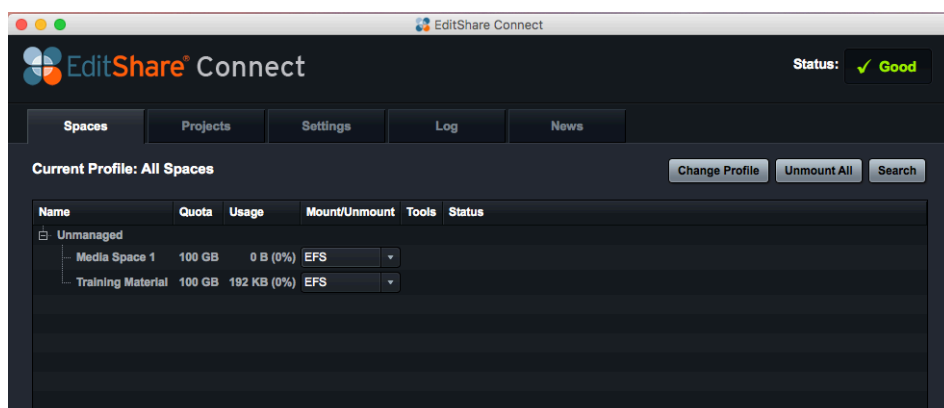


You can now import media into Final Cut Pro.

Choose **File>Import>Media**. Select your SD card from the top left, and check your files in the list



Choose **Copy to Library** and **Create Optimized Media**



Once finished importing and editing you can unmount your media spaces and quite EditShare Connect. Please then shut down the Mac